

By Land of John McGlellan

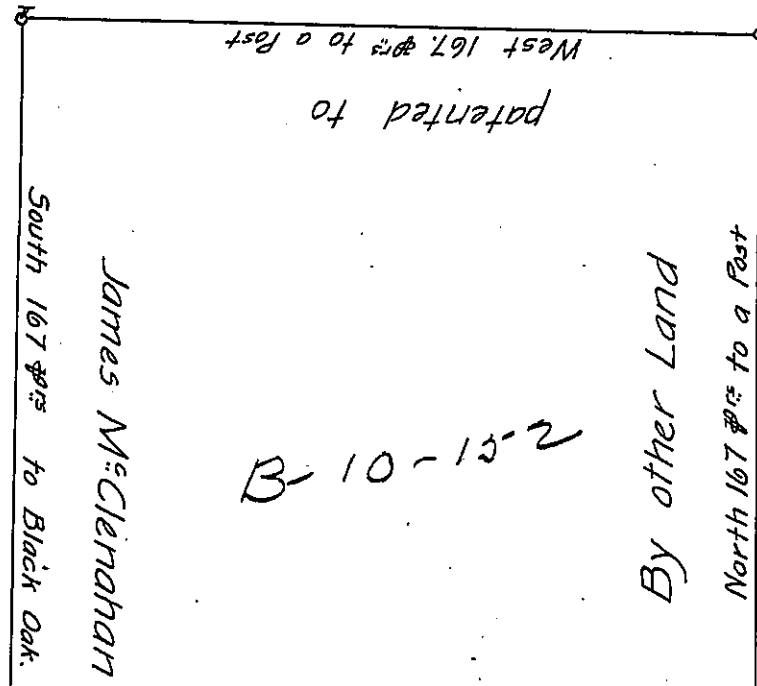
Land claim'd by James McGlenahan Jun. 103

North 34 1/2° to Post  
East 23 1/2° to Post  
N 88° 30' E 246 1/2' to an Hicory  
N 87° 77' to Post

James McGlenahan  
293 Acres & Allow.

By Land of David Scott.

North 225 1/2' to a Black Oak



By other Land

North 167 1/2' to a Post

By Land patented to James McGlenahan  
S 19° W 285 1/2' to a Post  
B-10-10-2

Beginning at West 76 1/2' to Post thence

West 100 1/2' to Post

Maryland Line.

The Draught of a Tract of Land situate in Antrim Township Cumberland County adjoining the Maryland Line containing two hundred and Ninety three Acres and an Allowance of Six Acres & Cent for Roads and Highways Surveyed for James McGlenahan the Eighth of May 1766 (ob) In pursuance of a Warrant from the Honble the Proprietors bearing Date at Philadelphia the 18<sup>th</sup> of April 1747.

John Armstrong

D.S.

To John Lukens }  
Surveyor Genl. }

IN TESTIMONY that the above is a copy of the original remaining on file in the Department of Internal Affairs of Pennsylvania, made conformably to an Act of Assembly approved the 16th day of February, 1833, I have hereunto set my Hand and caused the Seal of said Department to be affixed at Harrisburg, this twentyfirst day of November 1905.

Siaco P. Brown  
Secretary of Internal Affairs.